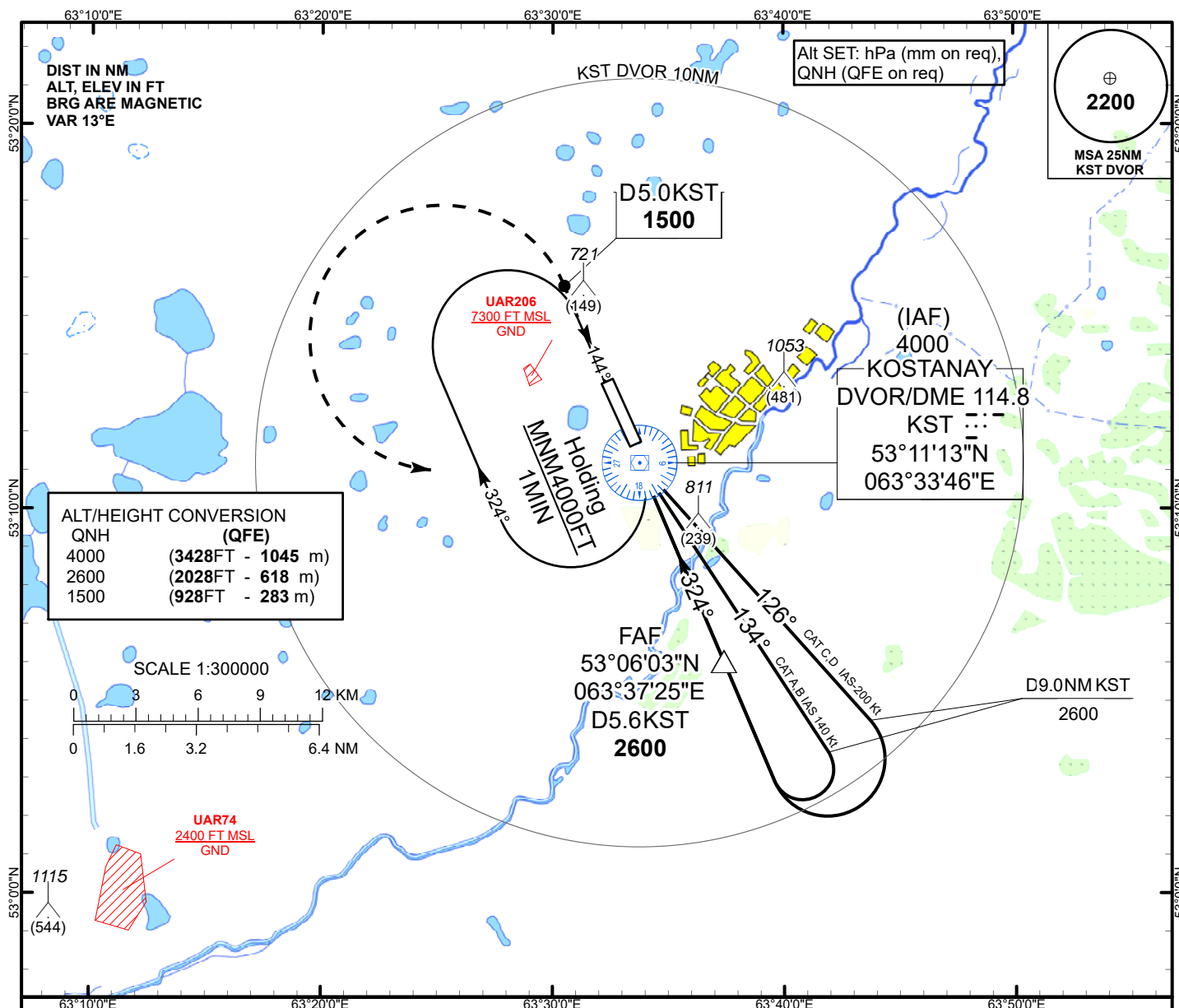


INSTRUMENT APPROACH
CHART
ICAO

AERODROME ELEV 601ft
HEIGHTS RELATED TO
THR RWY 32 - ELEV 572ft

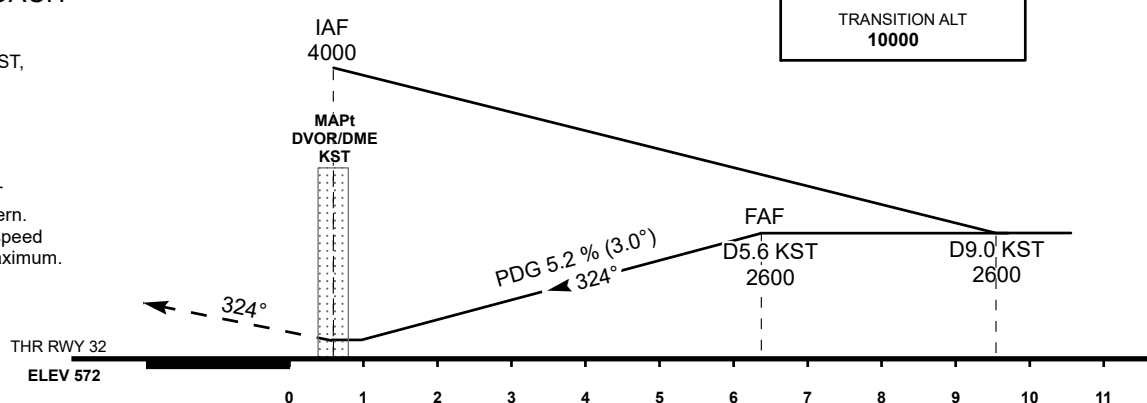
KOSTANAY TOWER 129.30
KOSTANAY ATIS (EN) 118.5
KOSTANAY ATIS (RU) 126.8

KOSTANAY
VOR/DME
RWY 32



MISSED APPROACH

Climb on track 324°
to 1500 or above,
outbound to D5.0NM KST,
turn LEFT to KST.
Climb initially to 2600,
then as directed.
RADIO FAILURE:
In the case of RCF
climb to 4000FT to KST
and join to holding pattern.
Missed approach turn speed
limited to 240Kt IAS maximum.



Aircraft Category		A	B	C	D	DIST to THR	NM	1	2	3	4	5	6	6.3
Straight-in Approach OCA/H						DME KST	NM	0.4	1.4	2.4	3.4	4.4	5.4	5.6
	VOR/DME	950(370)	950(370)	950(370)	950(370)	ALTITUDE	FT	939	1257	1575	1894	2212	2530	2600
						HEIGHT	FT	368	686	1004	1323	1641	1959	2029
Aerodrome Operating Minima MDH ft x RVR(CMV)						GS	Kt	80	100	120	140	160	180	
	VOR/DME					FAF-MAPt (5.6NM)	min:sec	4:12	3:22	2:48	2:24	2:06	1:56	
						Desc.Rate(5.2%)	ft/min	420	530	630	740	850	960	

KOSTANAY
VOR/DME

AERONAUTICAL DATA TABULATION

VOR approach to RWY32 from DVOR/DME KST	
Fix/point	Coordinates
(IAF) DVOR/DME KST	53° 11' 13.0"N 063° 33' 45.5"E
(FAF) D5.6 KST	53° 06' 03.0"N 063° 37' 25.2"E
THR RWY 32	53° 11' 49.00"N 063° 33' 23.08"E
Final approach descent angle is 3°	